

# Bed Bugs Limited for internal use only © 2017

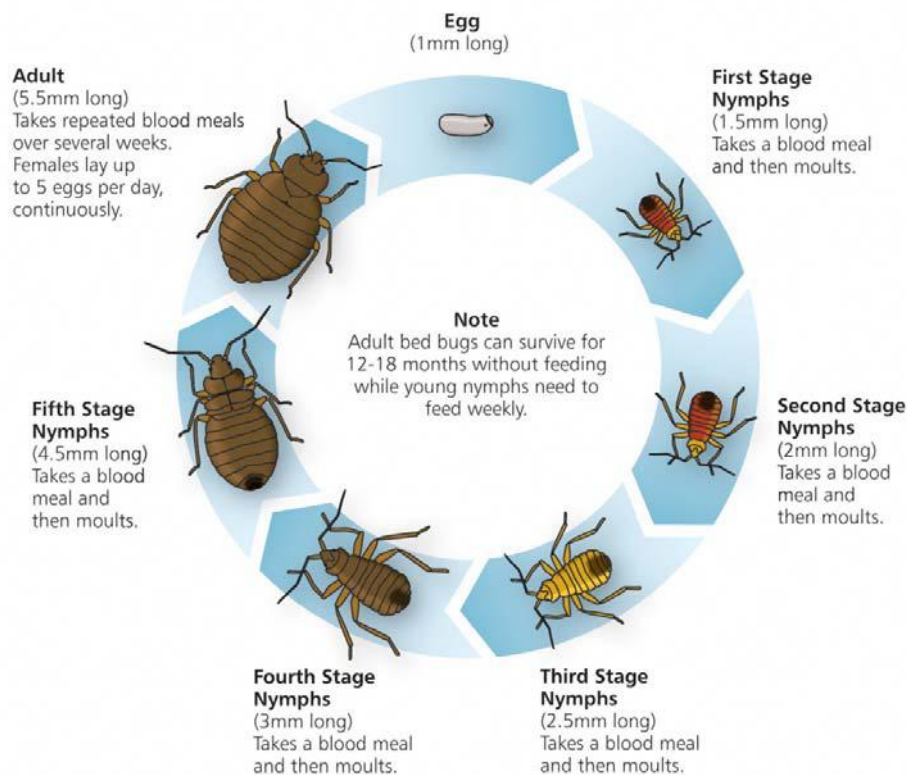
## Scales of Bed Bug infestations

In order to standardise assessments we have drawn up the following scale of infestations. Please use this scale from now on in all new infestations.

1. Light 1 or 2 bed bugs all same life stages no signs of breeding 2- 6 week duration
2. 3 or 4 bed bugs no signs of breeding 2 – 6 weeks duration
3. 5 plus bed bugs no signs of breeding 2 – 6 weeks duration
4. Few adults but signs of eggs 1 – 6 weeks duration
5. Few adults plus some babies of 1<sup>st</sup> and 2<sup>nd</sup> instar 1 – 8 week duration
6. Adults plus babies of 1<sup>st</sup> to 3<sup>rd</sup> instar 4 – 12 weeks duration
7. Multiple breeding generations 6 – 18 week duration contained to original room
8. Multiple breeding generations multiple rooms continual in the main room and sporadic in other rooms
9. Multiple breeding generations per room and on going breeding
10. All areas infested and likely to spread to adjoining properties

## Life Cycle of the Bed Bug

*Cimex lectularius*



Copyright 2009 Xenex Associates Limited  
Source www.BedBugBeware.com this image may be reproduced copyright free for public education purposes only, commercial use must be licensed from Xenex Associates Limited