



Bed-Bugs.co.uk

Useful information and professional treatment solutions.

Passive Bed Bug monitor evaluation protocol

Aim

Passive Monitors are designed to be early warning systems to indicate the early signs of bed bug activity in a commercial or domestic setting. It is important to understand that they will not assist with the decontamination of infected locations and should only be used as part of an integrated pest management approach.

The monitors work by providing the optimum environment for bed bugs and as such they need to be installed in specific locations on the frame of the bed, details of the installation locations are outlined below. After placement of the Monitor the room **MUST** be occupied as usual to keep the bugs active and reduce the risk of them spreading to other areas.

The monitor must be checked for signs of activity ideally during a monthly deep clean of the room. The three indicating signs of an infestation are:

- Faecal traces present on the detection skirt – these are most commonly described as black marks that appear to be left by a felt tip pen.
- Cast skins – a paper thin version of a bed bug left behind as they moult.
- Live samples – the contrasting colour between bed bugs and the surfaces of the monitor have been designed to aim detection.

Protocol

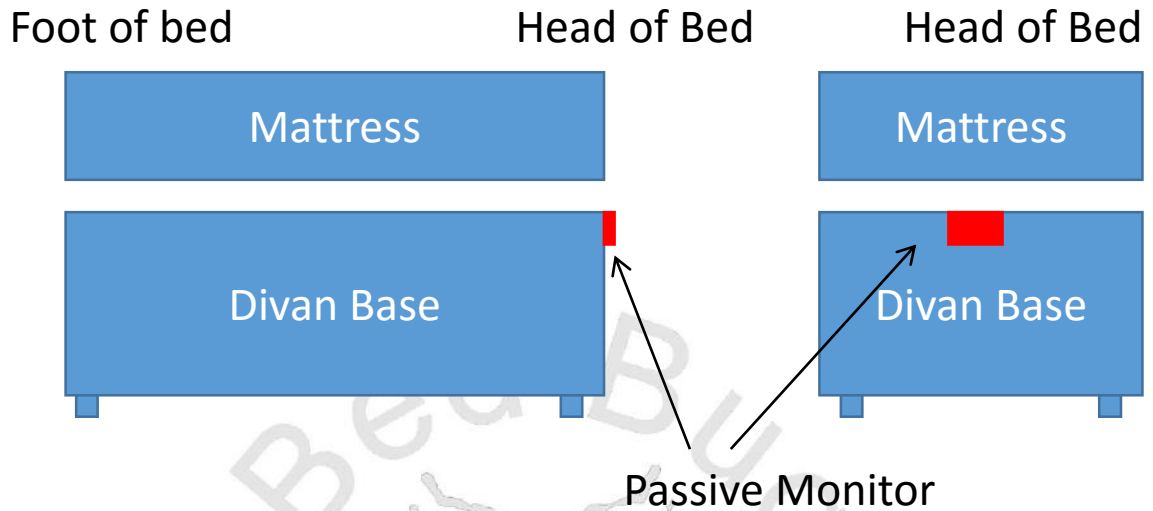
The following protocol is designed for the trials of bed bug monitors and assumes that the user is familiar with inspecting rooms for the signs of an infestation, if the user is not familiar with the signs of an infestation they should visit the galleries on www.bed-bugs.co.uk and www.bedbugbeware.com where images of faecal traces, cast skins and live samples are numerous.

If the room has a build up of dirt and dust remove it from all suitable harbourages to aid the adhesion of the monitor. The surfaces around the monitor **MUST** be free from residue of any previous treatment including home use products as some insecticides induce the alarm pheromones of bed bugs and may deter them from using the monitor.

The monitor is only effective if checked on a regular basis to enable early identification and rapid treatment.

Installation of monitor

Divan bed / box base bed



Slatted Bed



To install the monitor simply remove the protective backing from the base of the unit and stick in place in the optimal location. For confirmation of installation location on different types of beds please check the web resources listed below or send a picture of the bed to info@bed-bugs.co.uk .

<http://www.bed-bugs.co.uk/bedbugpassivemonitors.html>

<https://www.flickr.com/photos/bedbugasuk/albums/72157639977141754>

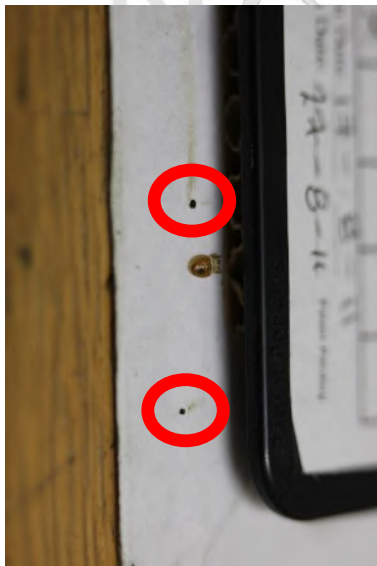
Inspection of monitor

The monitor should be inspected at monthly or weekly intervals depending upon the exposure risk. It should not be checked daily as over obsessing about bedbugs can be unhealthy.

We would suggest monitoring on the following basis:

- Normal guests (2+ nights average stay room occupied <80% of the time) – monthly inspections of all monitors on a rolling basis.
- High turn over guests (1 night average stay rooms occupied >80% of the time) – inspect every 2 weeks on a rolling basis.
- High risk locations (1 night average stay, rooms occupied >80% of the time and high risk clients such as cabin crew, coach parties and back packers) – inspect weekly on a rolling basis
- Domestic setting – weekly for high risk or recently exposed and every 2 weeks to a month for low risk locations.

The signs of an infestation are shown below:



Faecal Traces

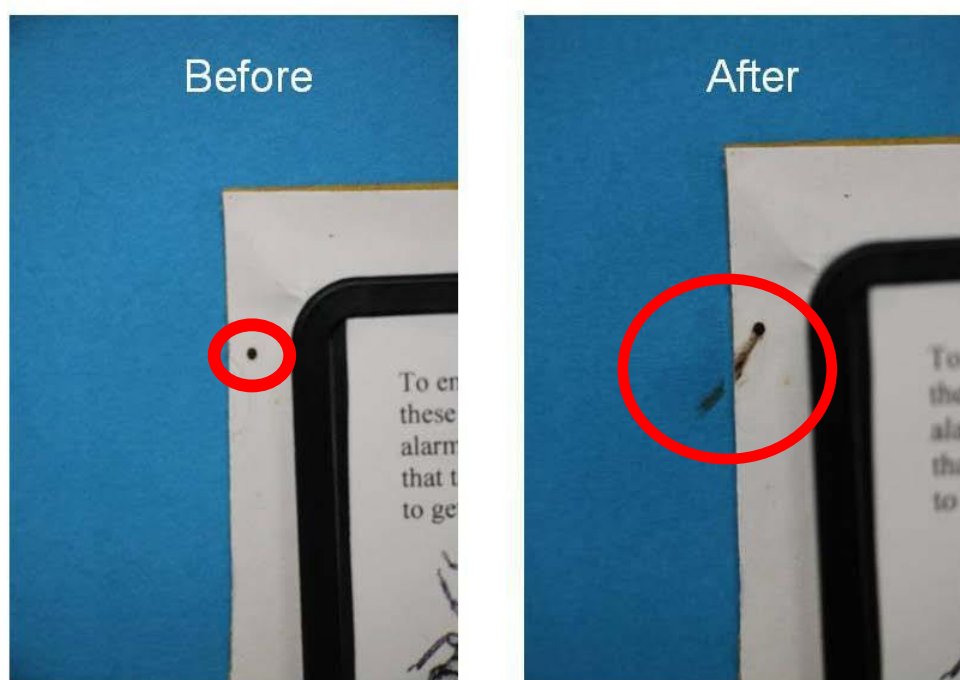


Cast skins

Faecal Trace smear test

Faecal traces can most easily be verified with a simple smear test or more accurately with BedBugBlue™ faecal trace kit. The appearance of a “cobalt” blue colour confirms bedbugs while no colour change is a negative result.

Take one of the fresh cotton buds and roll it around inside your lower lip until it is wet but not dripping with saliva. In a single motion sweep through the faecal trace starting >5mm away and passing through the centre in a single movement. If the spot smears as in the pictures below it can be confirmed as bed bug faecal material.



Faecal traces are a definitive sign of an infestation and are left by bedbugs as they enter the monitor post feeding. The greater the number of faecal traces the greater the number of bedbugs or the longer they have been present.

Any Passive Monitor with faecal traces should be removed and placed in a zip lock bag to ensure that any bedbugs are contained and unable to escape. Our field studies have shown that female bedbugs love to lay their eggs inside the monitor so its removal can greatly reduce the population that is present.

Just like bird boxes in your garden bedbugs find Passive Monitors ideal homes and because of their advanced design they offer a more optimal home than existing refugia.

Confirming signs

If you suspect that a monitor is showing signs of bed bug activity remove it from the location and seal in a zip lock type bag. It can be posted to our facility in London for verification. If you include an email address in the package we will let you know the status as soon as it arrives

Monitor Inspection Department
Bed Bugs Limited
12 Hermitage Lane
London
SE25 5HH

Any samples collected from monitors will be used to create a genetically diverse and geographically normalised colony of bed bugs to assist scientific research and product development. These samples will be free to access for academic research groups.

If you confirm an infestation monitors should be removed from the area until the infestation has been dealt with. In light and early detected infestations, it has been possible to remove the entire infestation in the passive monitor. This approach has been used successfully in several high risk hotel locations where rapid assessment and action has allowed non chemical treatment of the problem and for rooms to be immediately returned to full service. We would always advise a full and thorough inspection of the area to make sure there are no samples or eggs that have been missed.

If the replacement monitor shows signs of bed bug activity within a few days or weeks you **MUST** evaluate the area for potential adjoining infestation or localised sources of bedbugs that you are coming into regular contact with.